



CHARACTERISTICS

Mechanic fixing element, deformation working principle fixing device for joining 2 pieces.

Extremely useful when the plates to be fixed are accessible in just one side.

Easy and quick fixing.

Suitable for manual, battery and pneumatic riveters.

Steel-aluminum and stainless steel versions.

BASE MATERIAL



Aluminum frames



Metal Sheet



Metal Sheet – Heavy Profiles

APPLICATION EXAMPLES



Examples: joints between metal plates, aluminum frames and sheet metal

1. RANGE				
ITEM	CODE	SIZES	PHOTO	COMPONENT
1	RE-NO	From 3,2 x 6 mm to 6 x 25 mm		Standard rivet
2	RE-BL / RE-NL	From 3,2 x 8 mm to 4,8 x 16 mm		White/Black rivet
3	RE-CA	From 4 x 8 mm to 4,8 x 18 mm		Wide head rivet
4	RE-FL	From 4 x 12 mm to 4,8 x 50 mm		Peel dome head rivet
5	RE-IN	From 3,2 x 6 mm to 4,8 x 20 mm		Stainless steel rivet
6	RM-MA	--		Hand tool for blind rivets
7	RM-PA	--		Long arm riveter
8	RM-EX	--		Lazy tong riveter

2. INSTALLATION DATA

2.1. RE-NO

Standard Rivet



Properties



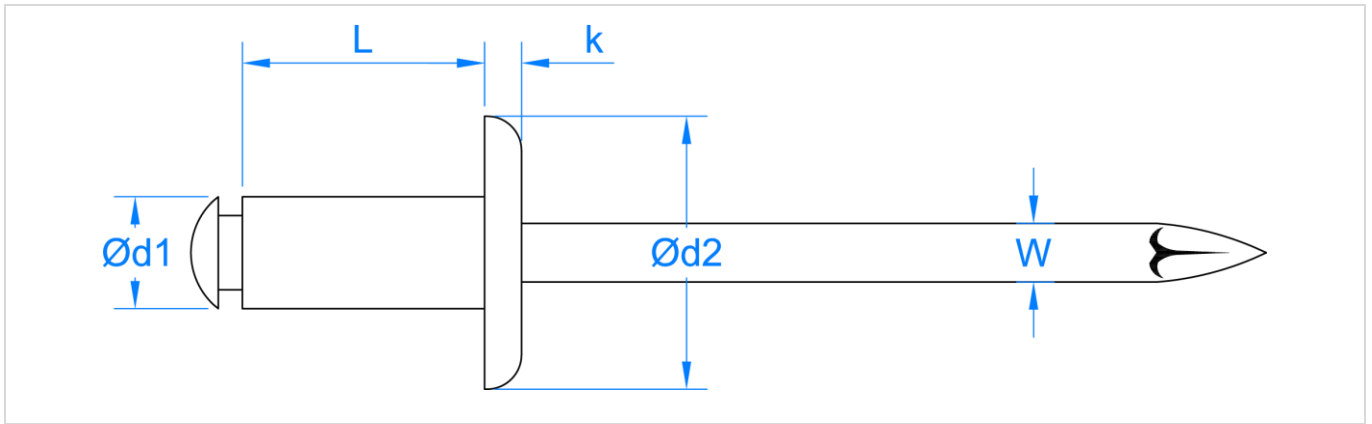
Aluminum body



Zinc plated steel shaft

Sizes

CODE	Ø Drill [mm]	Fixture thickness [mm]	Ø d1 [mm]	L [mm]	Ø d2 [mm]	K [mm]	W [mm]
RENO3206	3,3	1,0 – 3,0	3,2	06	6,2	1,2	1,8
RENO3208		3,0 – 5,0		08			
RENO3210		5,0 – 7,0		10			
RENO3212		7,0 – 9,0		12			
RENO3214		9,0 – 11,0		14			
RENO3216		11,0 – 13,0		16			
RENO3218		13,0 – 15,0		18			
RENO4006		4,1		0,5 – 2,0			
RENO4008	2,0 – 4,0		08				
RENO4010	4,0 – 6,0		10				
RENO4012	6,0 – 8,0		12				
RENO4014	8,0 – 10,0		14				
RENO4016	10,0 – 12,0		16				
RENO4018	12,0 – 14,0		18				
RENO4020	14,0 – 16,0		20				
RENO4025	16,0 – 18,0		25				
RENO4030	23,0 – 16,0		30				
RENO4035	26,0 – 30,0	35					
RENO4806	5,0	0,5 – 1,5	4,8	06	9,0	1,6	2,7
RENO4808		1,5 – 3,5		08			
RENO4810		3,5 – 5,5		10			
RENO4812		5,5 – 7,5		12			
RENO4814		7,5 – 9,5		14			
RENO4816		9,5 – 11,5		16			
RENO4818		11,5 – 13,5		18			
RENO4820		13,5 – 15,0		20			
RENO4822		15,0 – 17,0		22			
RENO4824		17,0 – 19,0		24			
RENO4826		19,0 – 21,0		26			
RENO4828		21,0 – 23,0		28			
RENO4830		23,0 – 25,0		30			
RENO4835		25,0 – 30,0		35			
RENO6008	6,1	1,0 – 2,0	6,0	08	11,3	1,9	3,2
RENO6010		2,0 – 4,0		10			
RENO6012		3,0 – 6,0		12			
RENO6016		6,0 – 10,0		16			
RENO6018		10,0 – 12,0		18			
RENO6025		15,0 – 19,0		25			



2.2. RE-BL/RE-NE White rivet / Black rivet



Properties



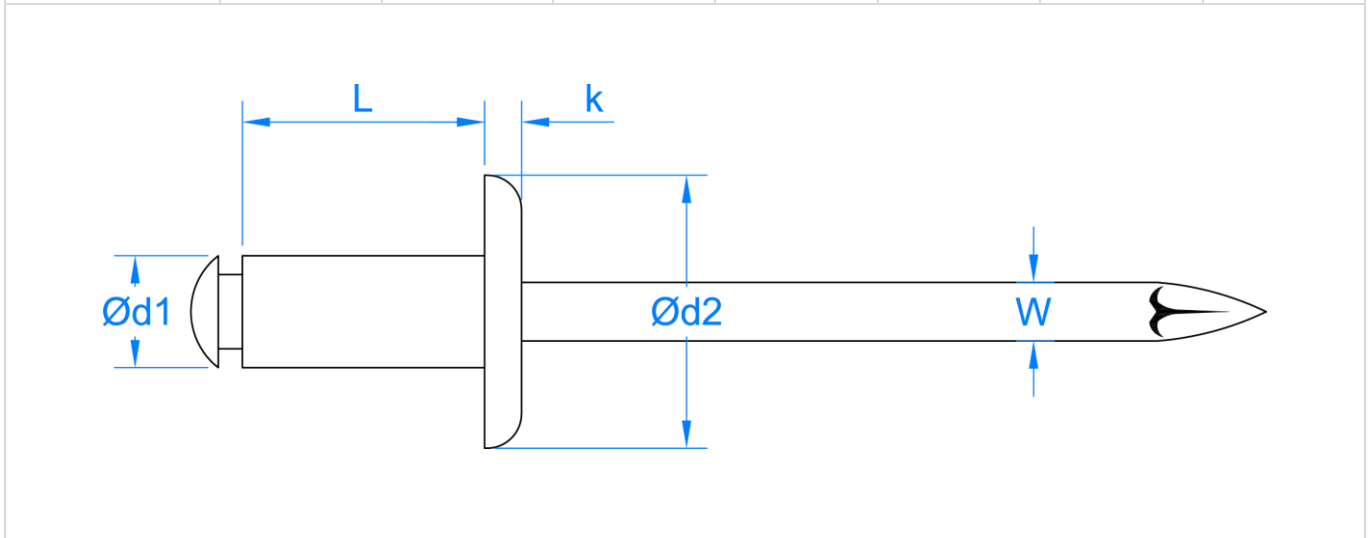
Aluminum body



Zinc plated steel shaft

Size

CODE	Ø Drill [mm]	Fixture thickness [mm]	Ø d1 [mm]	L [mm]	Ø d2 [mm]	K [mm]	W [mm]
RENO3208BL / NE	3,3	3,5 – 5,0	3,2	08	6,3	1,0	1,8
RENO3210BL / NE		5,0 – 7,0		10			
RENO3212BL / NE		7,0 – 9,0		12			
RENO4008BL / NE	4,1	3,0 – 5,0	4,0	08	8,0	1,3	2,2
RENO4010BL / NE		5,0 – 6,5		10			
RENO4012BL / NE		6,5 – 8,5		12			
RENO4014BL / NE		8,5 – 10,5		14			
RENO4810BL / NE	5,0	4,0 – 6,0	4,8	10	9,5	1,4	2,6
RENO4812BL / NE		6,0 – 8,0		12			
RENO4814BL / NE		8,0 – 10,0		14			
RENO4816BL / NE		10,0 – 12,0		16			



2.3. RE-CA

Wide head rivet



Properties



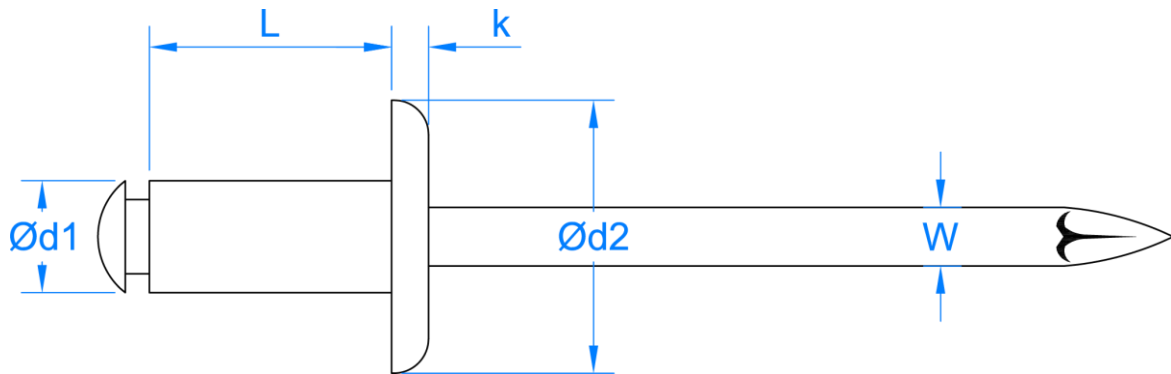
Aluminum body



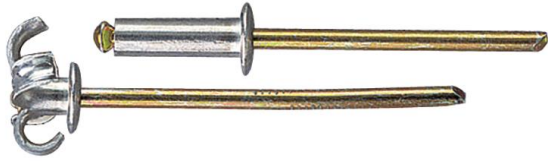
Aluminum body

Sizes

CODE	Ø Drill [mm]	Fixture thickness [mm]	Ø d1 [mm]	L [mm]	Ø d2 [mm]	K [mm]	W [mm]
RECA4008	4,1	2,0 – 4,0	4	08	11,8	1,9	2,2
RECA4010		4,0 – 6,0		10			
RECA4012		6,0 – 8,0		12			
RECA4016		10,0 – 12,0		16			
RECA4810	5,0	3,5 – 5,5	4,8	10	13,8	2,3	2,6
RECA4812		5,5 – 7,5		12			
RECA4814		7,5 – 9,5		14			
RECA4816		9,5 – 11,5		16			
RECA4818		11,5 – 13,5		18			



2.4. RE-FL Peel dome head rivet



Properties



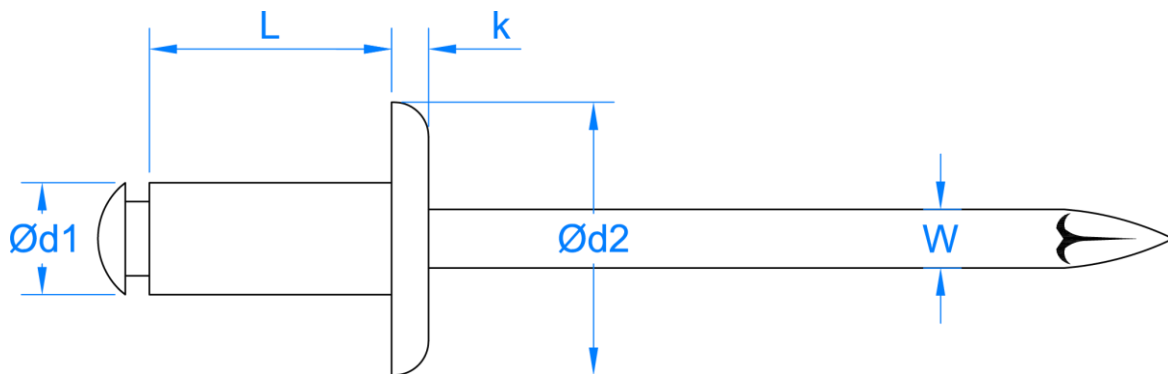
Aluminum body



Aluminum body

Sizes

CODE	Ø Drill [mm]	Fixture thickness [mm]	Ø d1 [mm]	L [mm]	Ø d2 [mm]	K [mm]	W [mm]
REFL4012	4,1	4,0 – 6,5	4,0	12	8,0	1,3	2,3
REFL4014		6,0 – 9,0		14			
REFL4016		8,0 – 11,0		16			
REFL4018		10,0 – 13,0		18			
REFL4020		12,0 – 15,0		20			
REFL4025		15,0 – 20,0		25			
REFL4814	5,0	4,0 – 8,0	4,8	14	9,5	1,4	2,8
REFL4816		6,0 – 10,0		16			
REFL4818		8,0 – 12,0		18			
REFL4824		15,0 – 18,0		24			
REFL4830		19,0 – 24,0		30			
REFL4835		24,0 – 29,0		35			
REFL4840		29,0 – 34,0		40			
REFL4845		34,0 – 39,0		45			
REFL4850		38,0 – 42,0		50			



2.5. RE-IN

Stainless steel rivet



Properties

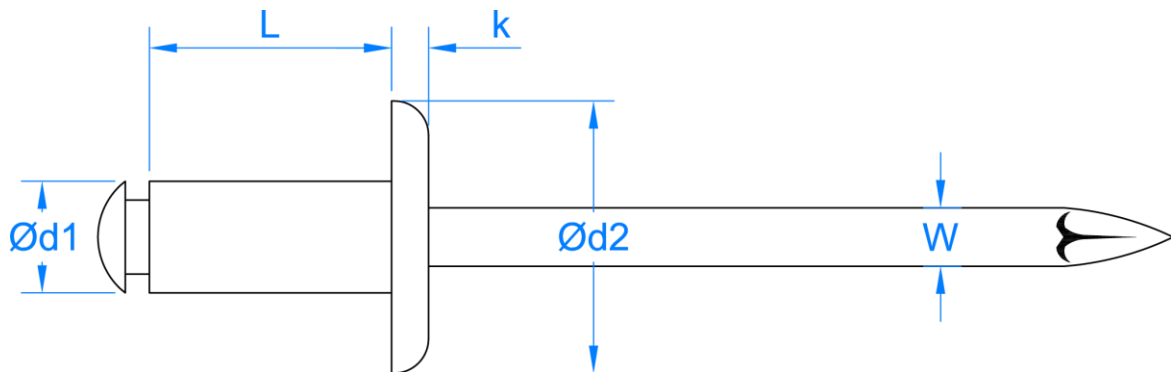


Stainless steel body

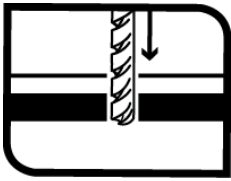
Stainless steel shaft

Sizes

CODE	Ø Drill [mm]	Fixture thickness [mm]	Ø d1 [mm]	L [mm]	Ø d2 [mm]	K [mm]	W [mm]
REIN3206	3,3	0,5 – 3,0	3,2	06	6,3	1,0	2,0
REIN3208		3,0 – 5,0		08			
REIN3212		6,5 – 8,5		12			
REIN3215		10,5 – 12,5		15			
REIN4008	4,1	2,5 – 4,5	4,0	08	8,0	1,3	2,5
REIN4010		4,5 – 6,5		10			
REIN4012		6,5 – 8,5		12			
REIN4016		10,0 – 12,0		16			
REIN4810	5,0	4,0 – 6,0	4,8	10	9,5	1,4	2,9
REIN4812		6,0 – 8,0		12			
REIN4816		8,0 – 11,0		16			
REIN4818		11,0 – 13,0		18			
REIN4820		13,0 – 15,0		20			

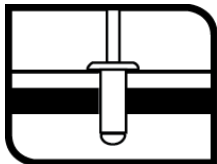


3. INSTALLATION PROCEDURE



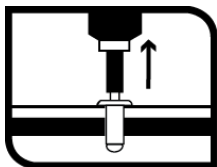
1. DRILL

Drill diameter as it is specified in the product's table.
Make sure the holes are aligned and the structure is properly fixed.



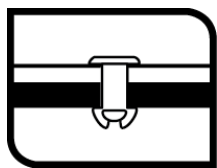
2. PLACE

Insert the rivet till the head reaches the limit, the riveting part should be protrude over the other hole.
Do it with caution, should be a clearance fit, do not push the rivet to get it in.



3. RIVETING

Place the riveter onto the rivet stem. Hold the riveter coaxial with the hole is being fixed into.
Make sure you hold the riveter firmly, constant and coaxial with the rivet.



4. SPLITTING

Once the rivet has been riveted, split the rivet stem from the riveted fixing.

4. RECOMMENDED LOAD

CODE	TENSION [kg]	SHEAR [kg]
RENO32XX	100	78
RENO40XX	160	118
RENO48XX	228	172
RENO60XX	358	284
RENO32XXBL/NE	100	78
RENO40XXBL/NE	160	118
RENO48XXBL/NE	228	172
RECA40XX	160	118
RECA48XX	228	172
REFL40XX	142	122
REFL48XX	184	164
REIN32XX	295	204
REIN40XX	408	358
REIN48XX	470	572